



**the  
spring  
catalog**



## LOGO

The universal symbol representing the spirit of friendship, happiness and peace: the smiley face. When times get trying in medical settings give your patients and co-workers another reason to smile. Spread Good Cheer.

## THE CUT

Streamlined and modern tailoring creates figure flattering silhouettes by focusing on long, lean shapes that maintain the illusion of height and length.

## THE FIT

Meticulously crafted and perfectly seamed to compliment your body's natural curves for unprecedented comfort.

## THE FABRIC

Hardwearing, long-lasting and comfortable fabrics blended for easy care and maintenance.



## SIGNATURE POCKET

Discreet design details split the traditional one pocket into four separate compartments. The back pockets are strategically placed to lift and shape the derrière.




## SECRET MESH POCKETS

Safeguard your valuables with hidden interior pockets constructed of a durable and soft mesh that provides additional storage and security without adding bulk.

# EXPECT COMPLI



**DRAWSTRING**  
Constructed from the finest, most durable and soft cotton twill, our signature drawstrings add a splash of color. Some styles have drawstrings that can be worn either tucked in or out. The choice is yours.

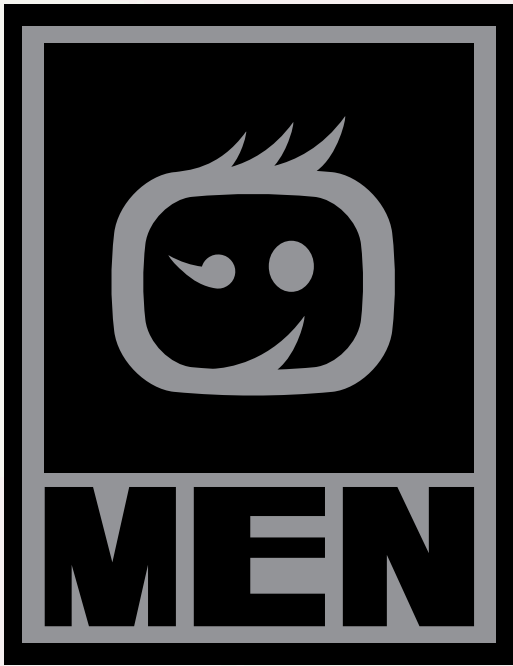
 **BUNGEE**  
The yellow bungee cord doubles as an accent as well as a functional ID badge holder.

**ACCESSORY LOOP**  
Keep it organized! The invisible pocket organizer inside the garment is perfect for keeping your tools within easy reach.



**MENTS.**

6026 RED  
5026 RED



65% Polyester / 35% Cotton



- BLK**  
black
- CBL**  
ceil blue
- NAVY**  
navy
- PEW**  
pewter
- RYL**  
royal
- WIN**  
wine

6716C NCB  
5716 NAVY

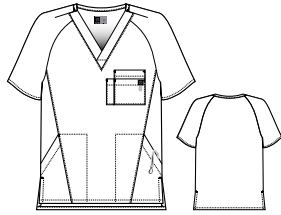




NEW

### Men's Raglan Solid 5 Pocket Top | 6716

- Raglan sleeve with shoulder darts
- Tagless neck
- Geometric stacked chest pocket with pen slot
- Front forward seams with two roomy invisible pockets
- Signature black ID bungee loop at chest pocket
- Inner utility hook to secure accessories such as keys or badge reels



Length: 31" (Size M)

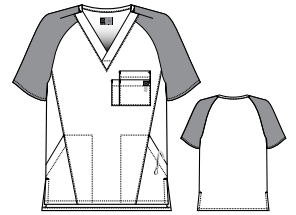
S - 3X  
**BLK, CBL, NRV, PEW, RYL, WIN**



NEW

### Men's Raglan Block 5 Pocket Top | 6716C

- Contrast raglan sleeve with shoulder darts
- Tagless neck
- Geometric stacked chest pocket with pen slot
- Front forward seams with two roomy invisible pockets
- Signature black ID bungee loop at chest pocket
- Inner utility hook to secure accessories such as keys or badge reels



Length: 31" (Size M)

S - 3X  
**BKR, NCB, PNV, RPW, WNV**

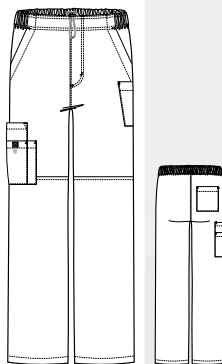


NEW

### Men's Pull-Cord Waist Pant | 5716

- Full inner bungee cord adjustable waist with black stopper to secure
- Flat front with 3/4 elastic waist
- Functional zipper fly
- Two front roomy slash pockets
- Scissors pocket beneath wearer's left slash pocket
- Geometric stacked cargo pocket with pen slot

5716: S - 3X, Tall S - 3X(5716T)  
**BLK, CBL, NRV, PEW, RYL, WIN**



# Mink

by WonderWink

*Oh my soft!*

Update your closet with our wardrobe staples.

We've incorporated the fundamentals of classic workwear and applied our signature design elements to create your new favorite outfit.

Our sweet, feather-light, and baby-soft fabric defines luxury. Perfected finishes, details and fit to flatter any body type. Modern tailoring to create unprecedented comfort.



6203 ALM  
5203 ALM



6503 WHT  
5303 WHT



6403 BLS  
5303 BLS



**NEW**  
**Four Pocket Ruffle Neck Top | 6403**

- Banded Neck, sleeves and center front
- Banded pocket openings with decorative buttons
- Three front mini decorative buttons
- Partial elastic at back waist
- Signature ID bungee loop

XS - 2X

**ALM, BLK, BLS, HPK, NVY, PEW, RYL, WHT**



**NEW**  
**Ruffle Wrap Top | 6503**

- Mock Wrap Top with ruffle detail at yoke
- Two lower large patch pockets
- Lower cell pocket with matching ruffle detailing
- Soft mini ruffle at shoulder caps
- Back yoke with soft gathers that create an easy, swing fit

XS - 2X

**ALM, BLK, BLS, HPK, NVY, PEW, RYL, WHT**



**NEW**  
**Ruffle Cargo Roll-Up Pant | 5303**

- Two front patch pockets and one back pocket
- Large cargo with button flap closure
- Small cargo with ruffle detail at button flap closure
- Elasticized utility loop on wearer's right side
- Full drawstring with easy elastic at waist that creates a soft ruffle
- Button fastener tab at leg openings for optional roll-up capri pants

XS - 2X

**ALM, BLK, BLS, HPK, NVY, PEW, RYL, WHT**



### Fashion V-Neck | 6103

- Fashion v-neck with yoke detail
  - 2 lower pockets including 1 WonderWink signature triple pocket with a hidden mesh pocket (total 5)
  - Signature ID bungee loop
  - Invisible 3 part accessory loop
- XS - 2X  
BLK, HPK, NVY, PEW, RYL, WHT



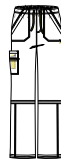
### Fashion Y-Neck | 6203

- Fashion y-neck with princess seaming for a flattering tailored fit
  - 2 lower pockets including 1 WonderWink signature triple pocket with a hidden mesh pocket (total 5)
  - Signature ID bungee loop. Invisible 3 part accessory loop
- XS - 2X  
**ALM**, BLK, **BLS**, HPK, NVY, PEW, RYL, WHT



### Fashion Round Neck | 6303

- Fashion round neck top with a button closure
  - Lengthening front seaming detail with 2 welt pockets
  - Banded sleeves with soft shirring detail
- XS - 2X  
BLK, HPK, NVY, PEW, RYL, WHT



### Boot Cut Cargo Pant | 5103

- Boot cut cargo pant with a mock fly and a full elastic and drawstring waist
  - 2 front patch pockets, 1 WonderWink triple cargo pocket with a hidden mesh pocket, and 1 back pocket (total 7)
  - Stitch detailing at the knee and hem
- XS - 2X  
BLK, HPK, NVY, PEW, RYL, WHT



### Flare Leg Fashion Pant | 5203

- Flare leg fashion pant and a 1/2 elastic and drawstring waist
  - 2 front slash pockets, 1 hidden mesh pocket, and 1 WonderWink signature triple back pocket (total 6)
  - Vented hems for ease of movement
- XS - 2X  
**ALM**, BLK, **BLS**, HPK, NVY, PEW, RYL, WHT  
Petite XS - 2X (5203P)  
BLK, HPK, NVY, PEW, RYL, WHT

NEW COLOR

**ALM**  
almond

**BLK**  
black

NEW COLOR

**BLS**  
blush

**HPK**  
hot pink

**NVY**  
navy

**PEW**  
pewter

**RYL**  
royal

**WHT**  
white



# Rea



**NEW**

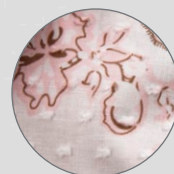
*Lacy Loo / LCL*

Available Styles - 6407

XS-2X

Coordinating Colors

**ALM** **BLS** **WHT**



Raised Swiss dot  
textured fabric

**NEW**

*Fanciful Nature / FNA*

Available Styles - 6507

XS-2X

Coordinating Colors

**ALM** **BLK** **BLS**  
**GAP** **HPK** **PEW** **WHT**





# True mance

100% Cotton Soft finish



**NEW**

Coco / COC

Available Styles - 6507

XS-2X

Coordinating Colors

ALM BLS WHT



Raised Swiss dot  
textured fabric

**NEW**

Wheely Black / WBL

Available Styles - 6407

XS-2X

Coordinating Colors

ALM BLK BLS  
GAP HPK PEW WHT



# Four-

High Performance, Seri



Secret mesh pocket in pocket

Accessory loop in pocket

Triple cargo pocket with bungee cord

Double knee stitch detail

## WEAR IT STRAIGHT OUT OF THE DRYER!

Our 100% polyester Four Stretch fabric is created using a mechanical stretch yarn process specially engineered to exceed the performance and durability of other fabrics. Unique washed-effect texture for unbeatable softness and EASY CARE.

6214 PEW  
5214 PEW



# Stretch 4

ously Low Maintenance Workwear



Sporty contrast top stitching

Secret mesh pocket in pocket

Accessory loop in pocket

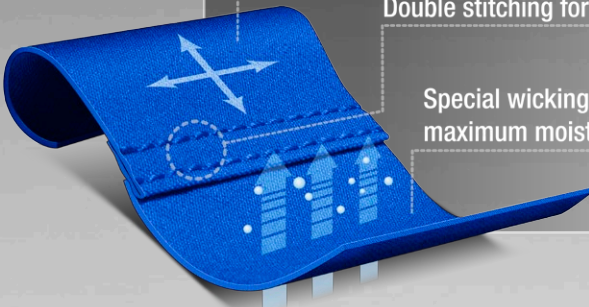
WonderWink striped drawstring

Front seam pockets

4-Way Stretch for maximum performance

Double stitching for maximum durability

Special wicking features for maximum moisture management



6314 VBY  
5314 VBY

# Four-Stretch<sup>4</sup>

High Performance, Seriously  
Low Maintenance Workwear

## Sporty V-Neck Top | 6214

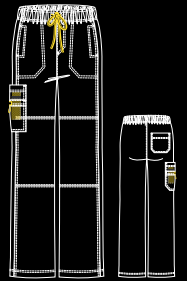
- Shaping panel at waist and sides
- Angled yoke at shoulders
- Tagless neck
- Stylized back yoke with locker loop
- Logo at back yoke
- Two front pockets with utility loop
- Secret mesh pocket in pocket



XS - 3X  
BLK, CBL, HTR, NVY, PEW, RYL, VBY, WHT  
**NOW AVAILABLE TO 3X!**

## Sporty Cargo Pant | 5214

- Boot cut cargo pocket
- Full elastic WonderWink drawstring
- Back patch pocket
- Forward side seam
- Reinforced front seam pockets
- Double knee stitch detail
- Side vents at hem for ease of movement



XS - 3X  
BLK, CBL, HTR, NVY, PEW, RYL, VBY, WHT  
Petite XS - 3X (5214P)  
BLK, NVY, PEW, RYL, WHT  
**NOW AVAILABLE TO 3X!**





**BLK**  
black

**CBL**  
ceil blue

**HTR**  
hunter

**NAVY**  
navy

**PEW**  
pewter

**RYL**  
royal

**VBY**  
very berry

**WHT**  
white

**NEW**  
**Raglan Sleeve Mock Wrap Top | 6314**

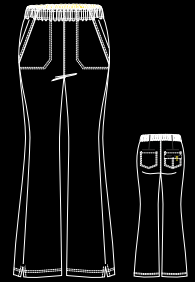
- Raglan sleeve with double-needle stitching
- Front princess seaming for shaping
- Mock belt at waist
- Tagless neck
- Stylized back yoke with locker loop
- Logo at back yoke
- Two front pockets with utility loop
- Secret mesh pocket in pocket



XS - 3X  
**BLK, CBL, HTR, NAVY, PEW, RYL, VBY, WHT**

**NEW**  
**Flip Flare Leg Pant | 5314**

- Flare leg pant with front pitched seaming
- Full elastic waistband that can be worn flipped up or down
- Two front pockets with stitched down inner pocket bag
- Two large back pockets, one with signature WonderWink pocket (total 4 at back)
- Darts at back waist for added curves
- Vented hems for ease of movement



XS - 3X  
**BLK, CBL, HTR, NAVY, PEW, RYL, VBY, WHT**



Brilliant

&

4

0

1

100% Cotton



NEW

**Rawr I (RWR)**

Available Style - 6077 / XS-2X

Coordinating Colors

GRP PEW RYL VBY WHT Trim



NEW

**Lola (LOL)**

Available Style - 6077 / XS-2X

Coordinating Colors

GRP PEW RYL VBY WHT BLK Trim



NEW

**Candy Striper I (CSP)**

Available Style - 6407 / XS-2X

Coordinating Colors

AQU BLK GRP PEW RYL VBY WHT RWR Trim



NEW

**Candy Combo I (CDC)**

Available Style - 6097 / XS-2X

Coordinating Colors

AQU BLK GRP VBY WHT BLK Trim



### Fire Frenzy | FIR

Available Style - 6077 / XS-2X

Coordinating Colors

AQU BLK CBL

GAP WHT

BLK

Trim



### How Bazaar | BAZ

Available Style - 6097 / XS-2X

Coordinating Colors

AQU BLK PEW

RYL WHT

WHT

Trim



### Looking Glass Rose | LGR

Available Style - 6107 / XS-2X

Coordinating Colors

BLK HPK

PEW WIN

BLK

Trim



### Gypsy Border | GPB

Available Style - 6087 / XS-2X

Coordinating Colors

AQU BLK HPK

PEW RYL WHT



Trim  
BLK/HPK



# TWO STRETCH

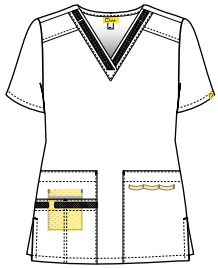
Face it. We perform better when we feel good. Indulge in our decadently soft blend of 52% of the finest cotton, 45% polyester and 3% spandex. Our stretch blend provides a beautiful hand and adds substance to the fabric. The two-way stretch weave creates a beautiful drape and a fit that feels customized to every woman's shape. Ultra flattering, incredibly versatile, and perfect for ease of movement and flow. Showcase your grace and strength.



6102 HPK  
5102 HPK



6202 BLK  
5202 BLK



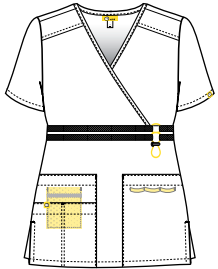
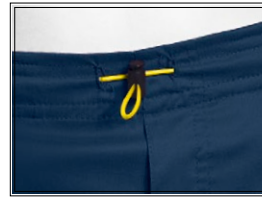
## V-NECK | 6102

### Flex Trimmed Sport Top

- Dyed-to-match mesh flex trim on the neck and pocket
- 2 Lower pockets including an accent WonderWink signature triple pocket with a round ID bungee and a hidden mesh pocket (total 5)
- Invisible 3 part accessory loop
- Side vents

XS - 2X

AQU, BLK, HPK, GRP, Nvy, WHT



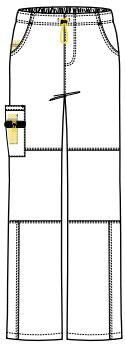
## MOCK WRAP | 6202

### Flex Waist Top

- Dyed-to-match mesh flex trim at the waist with a figure 8 ID bungee detail
- 2 lower pockets including a WonderWink signature triple pocket (total 5)
- Invisible 3 part accessory loop
- Side vents

XS - 2X

AQU, BLK, HPK, GRP, Nvy, WHT



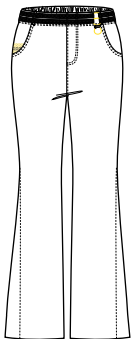
## CARGO | 5102

### Bungee Waist Flex Cargo Pant

- Dyed-to-match mesh trim
- 2 front pockets, 1 peek-a-boo mesh pocket, 1 WonderWink signature triple cargo pocket with a hidden mesh pocket, and 2 back pockets (total 9)
- Bungee waist tie
- Double knees

XS - 2X

AQU, BLK, HPK, GRP, Nvy, WHT



## FLARE | 5202

### Flare Leg Flat Front Flex Waist Pant

- Dyed-to-match mesh flex trim at the waist with a figure 8 ID bungee detail
- 2 front pockets, 1 peek-a-boo mesh pocket and 1 WonderWink signature triple back pocket (total 6)

XS - 2X

AQU, BLK, HPK, GRP, Nvy, WHT



<b>AQU</b> aqua	<b>BLK</b> black	<b>HPK</b> hot pink
<b>GRP</b> grape	<b>Nvy</b> navy	<b>WHT</b> white



# ORIGINS

Hardwearing, affordable & utilitarian chic basics with subtle design elements that add value to your investment. Let your imagination play with patterns, colors and styles to suit your every mood.

BRILLIANTLY  
COOL

6046 HPK



6006 PEW

6036 WHT

# THE ALPHA {6006}



- Unisex Fit V-Neck
- 1 WonderWink signature triple chest pocket (total 3)
- ID bungee loop

XS - 5X

BLK, CBL, CHC, EGP, GAP, GBL, HPK, HTR, MBL, NVY, PEW, RYL, WHT, WIN



# THE BRAVO {6016}



- WonderWink "Lady" Fit V-Neck
- 2 lower pockets including 1 WonderWink signature triple pocket with a hidden mesh pocket (total 5)
- Signature ID bungee loop
- Invisible 3 part accessory loop

XS - 5X

BLK, CBL, CHC, EGP, GAP, GBL, HPK, HTR, MBL, NVY, PEW, **RED**, RYL, WHT, WIN



# THE CHARLIE {6026}



- WonderWink "Lady" Fit Y-Neck Mock Wrap
- 2 lower pockets including 1 WonderWink signature triple pocket with a hidden mesh pocket (total 5)
- Signature ID bungee loop
- Invisible 3 part accessory loop

XS - 5X

BKS, BLK, CBL, CHC, EGP, GAP, GBL, HPK, HTR, MBL, NVS, NVY, PEW, **RED**, RYL, **RYS**, WHT, WIN



Code - Body/Trim

## SOLIDS



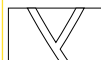
BKS - BLK/BLK



NVS - NVY/NVY



RYS - RYL/RYL



WHT - WHT/WHT

NEW



BLK - BLK/MBL



CBL - CBL/NVY



CHC - CHC/GAP



EGP - EGP/HPK



GAP - GAP/PEW



GBL - GBL/CBL



HPK - HPK/PEW



HTR - HTR/GAP



MBL - MBL/NVY



NVY - NVY/MBL



PEW - PEW/HPK



RED - RED/BLK



RYL - RYL/GAP



WIN - WIN/PEW

NEW

# THE DELTA {8006}



- Unisex Fit Round Neck
- Dyed to match snap front jacket
- 2 lower pockets including 1 WonderWink signature triple pocket with a hidden mesh pocket and 2 invisible chest pockets (total 7)
- Signature ID bungee loop
- Invisible 3 part accessory loop

XS - 5X

BLK, CBL, NVY, PEW, RYL, WHT





# THE ECHO

NEW {6036}



- "Lady" Fit Collared Top
- 2 Lower Pockets including 1 WonderWink signature pocket with a hidden mesh pocket (total 5)
- Signature ID bungee loop
- Invisible 3 part accessory loop
- Sporty stitching at waistband, front mock wrap, and around collar
- Front bust darts for shaping



XS – 3X

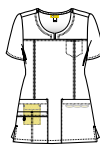
**BLK, EGP, GAP, MBL, NVY, PEW, RED, RYL, WHT**

# THE FOXTROT

NEW {6046}



- "Lady" Fit Notched Round Neck Top
- 2 Lower Pockets including 1 WonderWink signature pocket with a hidden mesh pocket and one invisible chest pocket (total 6)
- Signature ID bungee loop
- Invisible 3 part accessory loop
- Front seaming for added shaping
- Double-stitch detailing at neckline, yoke, front seams, and chest pocket



XS – 3X

**BLK, CBL, CHC, GBL, GAP, HTR, NVY, PEW, WIN**

NEW COLOR

**RED**  
red

**RYL**  
royal

**WHT**  
white

**WIN**  
wine

**MBL**  
malibu blue

**NVY**  
navy

**PEW**  
pewter

6046 CBL

PAPPA



QUEBEC



{5006}

Easy fit and easy to wear, a relaxed alternative to the standard boot cut. Flattering on all body types.

- Seamless Unisex Fit
- 4 pockets (one back triple pocket)
- Convertible drawstring - placement allows drawstring to be tucked inside the pant or displayed outside of it
- Signature ID bungee loop

XS-5X, Petites: XS-3X, Tall: XS-3X  
BLK, CBL, CHC, EGP, GAP, GBL, HPK, HTR, MBL, NVY, PEW, RYL, WHT, WIN

{5016}

A universal favorite, the classic relaxed pant. Comfortable fit through the seat and thigh, widening slightly below the knee.



- WonderWink "Lady" Fit
- 8 pockets
- Full elastic waistband that can be worn flipped down
- Signature ID bungee loop

XS-5X, Petites: XS-3X, Talls: XS-3X  
 BLK, CBL, CHC, EGP, GAP, GBL, HPK, HTR, MBL, NVY,  
 PEW, **RED**, RYL, WHT, WIN



{5026}

**Classic rise, slim through the hips and thighs,  
 fitted just at the knee before flaring at the  
 leg. Very lengthening and body slimming.**

- WonderWink "Lady" Fit
- 6 pockets
- 1/2 elastic waistband / flare leg
- Convertible drawstring - placement allows drawstring to be tucked inside the pant or displayed outside of it
- Signature ID bungee loop

XS-5X, Petites: XS-3X, Talls: XS-3X  
 BLK, CBL, CHC, EGP, GAP, GBL, HPK, HTR, MBL, NVY,  
 PEW, **RED**, RYL, WHT, WIN

# Origins



**NEW**  
**Farm Fam I (FFM)**  
Available Style - 6017 / XS-3X

Coordinating Colors





# Prints

Prints make fashion fun, sassy, edgy, cute and dramatic... show off your personality with these great conversation starters. Our printed tops are crafted from 100% cotton for a soft and easy-to-maintain garment that's always comfortable to wear.



**NEW**  
**Cherry-0's | (CHO)**

Available Style - 6027 / XS-3X

**HPK**  
Trim

Coordinating Colors

**EGP** **HPK** **WHT**



**NEW**  
**Sew What | (SWT)**

Available Style - 6027 / XS-3X

**GBL**  
Trim

Coordinating Colors

**CBL** **GAP** **GBL** **MBL** **RED** **RYL** **WHT** **WIN**



**NEW**  
**Hearty Har Har | (HHH)**

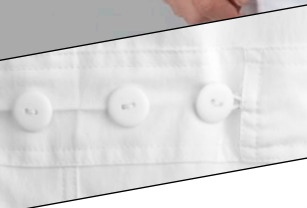
Available Style - 6017 / XS-3X

Coordinating Colors

**CBL** **GBL** **PEW** **WHT** **WNY**



# Lab Coat

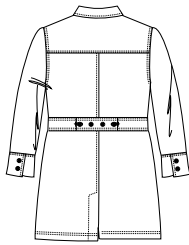


Adjustable bungee closure on back

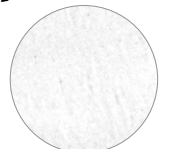
## Women's 4-Stretch Lab Coat | 7004

A well tailored lab coat is one of the best wardrobe investments you can make. Our take on the traditional lab coat is updated with princess seaming and a mock belt at the waist to make the coat figure-flattering. It has one signature WonderWink pocket with an ID bungee and mesh coin pocket. Three button closure. Two buttons on each sleeve and a back mock belt with 4 buttons and an adjustable bungee closure so you can choose your own silhouette. Single back vent. 100% polyester 4-way stretch fabric ensures durability and movement in the garment.

32" Length (Size M) - varies by size XS - 2X BLK, WHT (1/2 longer per size)



BLK



WHT

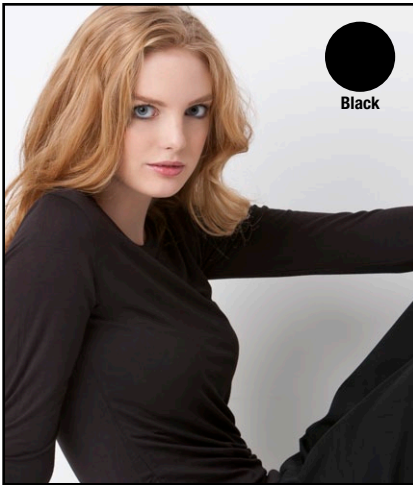


# LAYERS

## Silky Long Sleeve Tee | 2009



PEW  
NEW COLOR



Black



Navy



White

A fashionable twist on the classic long sleeve tee for those who love soft and luxurious fabrics. Our extra long sleeves create a modern look that's up-to-date with the latest trends. Indulge yourself.

XS - 2X  
BLK, Nvy, **PEW**, WHT  
Viscose/Spandex Blend





### Track Zip-Up Jacket | 8019

Chilly commutes? Over air-conditioned workplaces? Sometimes an underlayer just isn't enough. Meet our soft cotton blended fleece zip-front jacket with an easy cut for the most comfortable fit possible. Full zip front closure. Ribbed cuffs and ribbed bottom hem. Two roomy front pockets.

XS - 2X

BLK, NVY

60% Cotton / 40% Polyester Blended Fleece



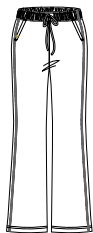
### Track Pant | 5019

Relax after a hard day's work in our cotton blend fleece pants. The soft elastic ribbed waistband includes a drawstring for maximum comfort.

XS - 2X

BLK, NVY

60% Cotton / 40% Polyester Blended Fleece



Black



Navy

# Washed Cotton Long Sleeve Tee | 2019



A shapely fitted basic crew tee that is a versatile must-have for every woman's closet. It's a great layering piece with flat seaming at the cuffs for additional comfort. Our lived-in, washed cotton knit fabric is unbelievably soft with a mini chest pocket that adds a fashion touch.

XS - 2X  
RYL, WHT, WNY  
100% Washed Cotton



# WonderWink Tank | 1019

Our decadently soft 100% washed cotton tanks are perfect for layering. Yellow and White feature our WonderWink Logo across the chest. The Black is solid.

XS - 2X  
BLK, WHT, WNY  
100% Cotton



# measure me



Trust us.

Finding the right size for your body is only half the battle. A correctly fitting garment not only keeps you looking professional, but also keeps you feeling comfortable for those long days at work. So take a deep breath and grab your tape measure.

## How to take your measurements:

### Chest:

Exhale, then measure under your arms, around the fullest part of your chest.

### Waist:

Keep the tape loose and measure around your natural waistline.

### Hip:

Standing with your feet slightly apart, measure around the fullest part of your body.

### Inseam:

Measure from the crotch to the bottom of the leg.

### Length:

We recommend Petites for women up to 5'2", Regular length up to 5'6", and Tall length for 5'7" and above.

"Lady" Fit	XS	S	M	L	XL	2X	3X	4X	5X
Ready-to-Wear	2-4	6-8	10-12	14-16	18-20	22-24	26-28	30-32	34-36
Chest/Bust	32-33	34-35	36-38	39-42	43-46	47-50	51-54	55-58	59-62
Waist	24-25	26-27	28-30	31-34	35-38	39-42	43-46	47-50	51-54
Hip	35-36	36-37	38-40	41-44	45-48	49-52	53-56	59-62	63-66
Inseam: Regular-31", Petite-28", Tall-33"									

Unisex Fit	XS	S	M	L	XL	2X	3X	4X	5X
Ready-to-Wear	2-4	6-8	10-12	14-16	18-20	22-24	26-28	30-32	34-36
Chest/Bust	33-34	35-37	38-40	41-44	45-48	49-52	53-56	57-60	61-64
Waist	25-26	27-29	30-32	33-36	37-40	41-44	45-48	49-52	53-57
Hip	34-35	36-38	39-41	42-45	46-49	50-53	54-57	58-61	62-65
Inseam: Regular-31", Petite-28", Tall-33"									

Men's Fit	S	M	L	XL	2X	3X
Chest	36-38	39-41	42-45	46-49	50-53	54-57
Waist	27-29	30-32	33-36	37-40	41-44	45-48
Hip	36-38	39-41	42-45	46-49	50-53	54-57
Inseam: Regular-31", Tall-34"						

CID RESOURCES, INC.  
 11625 Columbia Center Dr. Ste.200  
 Dallas, TX 75229  
 Toll Free 877-554-3306  
 FAX 214-442-9699

www.WonderWinkScrubs.com