



SPRING 2013



LOGO

The universal symbol representing the spirit of friendship, happiness and peace: the smiley face. When times get trying in medical settings, give your patients and co-workers another reason to smile. Spread Good Cheer.

THE CUT

Streamlined and modern tailoring creates figure flattering silhouettes by focusing on long, lean shapes that maintain the illusion of height and length.

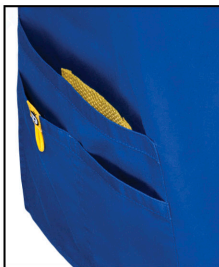
THE FIT

Meticulously crafted and perfectly seamed to compliment your body's natural curves for unprecedented comfort.

THE FABRIC

Hardwearing, long-lasting and comfortable fabrics blended for easy care and maintenance.

SIGNATURE POCKET



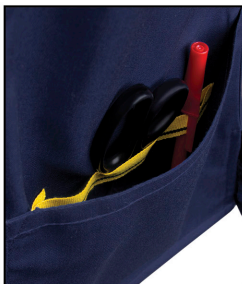
Discreet design details split the traditional one pocket into four separate compartments. The back pockets are strategically placed to lift and shape the derrière.

SECRET MESH POCKETS



Safeguard your valuables with hidden interior pockets constructed of a durable and soft mesh that provides additional storage and security without adding bulk.

ACCESSORY LOOP



Keep it organized! The invisible pocket organizer inside the garment is perfect for keeping your tools within easy reach.

DRAWSTRING



Constructed from the finest, most durable and soft cotton twill, our signature drawstrings add a splash of color. Some styles have drawstrings that can be worn either tucked in or out. The choice is yours.

BUNGEE



The yellow bungee cord doubles as an accent and as a functional ID badge holder.



WonderWink™

EXPECT COMPLIMENTS.



6056 ORS
5026 ORS



6046 HPK
5026 HPK



Heavy duty utility styling without the bulk

52% cotton / 45% polyester/
3% spandex for a flexible stretch fit

Chic, streamlined and cool modern uniforms

Details matter!

Utilities

6302 PER
5302 PER



An absolute must have for every closet

All the storage you need and more

Look great, stay organized and never misplace your valuables!

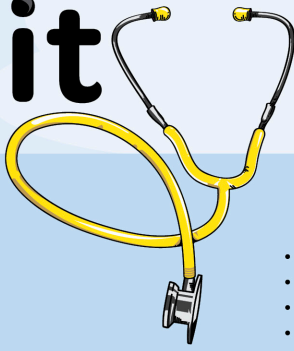
Girl *STRETCH!*



6402 MER
5402 MER

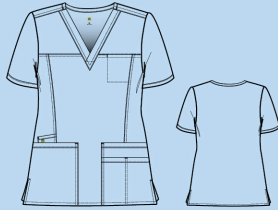
Utilit Girl

STRETCH!



V-Neck Multi-Pocket Top | 6302

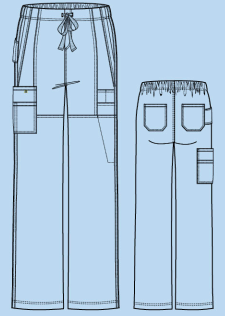
- V-neck top with 6 pockets
- Invisible chest pocket at yoke
- Two large front patch pockets with signature WonderWink pocket
- Peek-a-boo pocket at right side
- Hidden internal accessory loop in pocket
- Tagless neck
- 52% cotton/ 45% polyester/ 3% spandex for a flexible stretch fit



XS - 3X (Size M length: 27 1/4")
 AQU, BLK, GRP, HPK, **MER**, NVY, **PER**, PEW, RYL, WHT

Utility Cargo Pant | 5302

- Boot cut multi-pocket pant
- Full dyed-to-match drawstring waist with back elastic
- Two front slash pockets, two back pockets
- Stacked compartment pockets for pens, scissors, and other tools and gadgets
- Large utility loop at right side
- Double-needle stitching throughout garment
- 52% cotton/ 45% polyester/ 3% spandex



XS - 3X
 AQU, BLK, GRP, HPK, **MER**, NVY, **PER**, PEW, RYL, WHT

NEW Petite: XS - 3X (5302P)
NEW Tall: XS - 3X (5302T)
 AQU, BLK, GRP, HPK, **MER**, NVY, **PER**, PEW, RYL, WHT





AQU
aqua

BLK
black

GRP
grape

HPK
hot pink

NEW COLOR

MER
merlot

NAVY
navy

PEW
pewter

NEW COLOR

PER
periwinkle

RYL
royal

WHT
white

Mock Wrap Multi-Pocket Top | 6402

- Mock wrap 5 pocket top
- Front princess seams for shaping
- Dropped shoulder with ID slot allows easy placement of your ID clip/reel
- Side utility loop at waist
- Two large front patch pockets with signature WonderWink pocket
- Peek-a-boo pocket at right side
- Hidden internal accessory loop in pocket
- Tagless neck
- 52% cotton/ 45% polyester/ 3% spandex for a flexible stretch fit

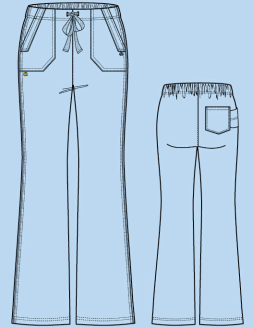


XS - 3X (Size M length: 26 3/4")

AQU, BLK, GRP, HPK, **MER**, NAVY, **PER**, PEW, RYL, WHT

Utility Flare Pant | 5402

- Flare leg utility pant
- Full dyed-to-match drawstring waist with back elastic
- Two front patch pockets
- One back pocket with large utility loop at right side
- Double-needle stitching throughout garment for added durability
- 52% cotton/ 45% polyester/ 3% spandex for a flexible stretch fit



XS - 3X

AQU, BLK, GRP, HPK, **MER**, NAVY, **PER**, PEW, RYL, WHT

Petites: XS - 3X

AQU, BLK, GRP, HPK, **MER**, NAVY, **PER**, PEW, RYL, WHT



NEW
Blissful Nature (BSN)

Available Style - 6647 / XS-2X

Coordinating Colors

MER RED RYL WHT
 YLW

MER
 Trim



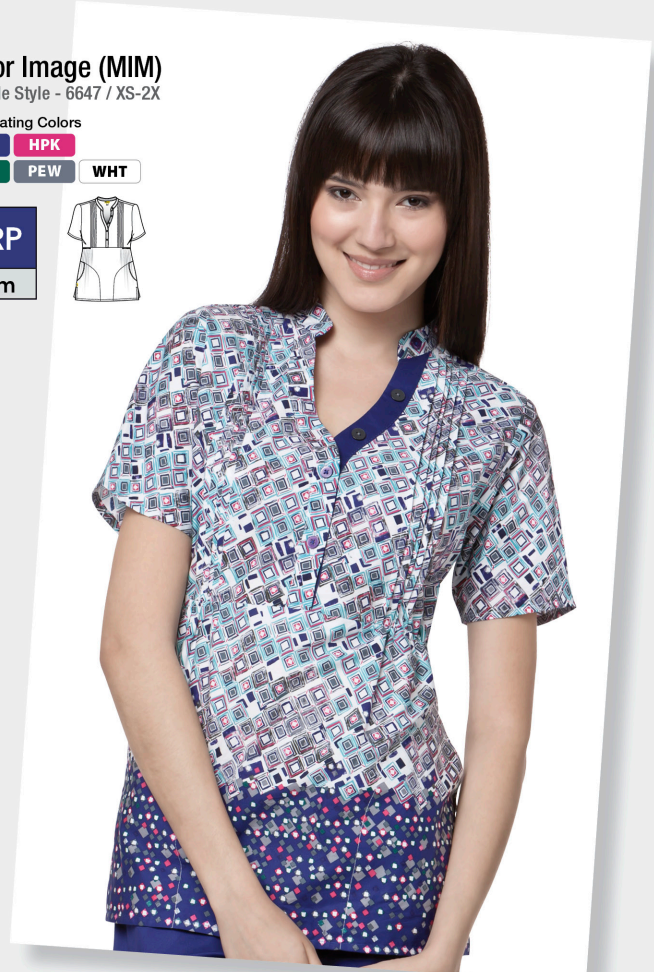
Mirror Image (MIM)

Available Style - 6647 / XS-2X

Coordinating Colors

GRP HPK
 HTR PEW WHT

GRP
 Trim



PLAYFUL PATTERNS

Deco Flowers (DFR)

Available Style - 6647 / XS-2X

Coordinating Colors

ALM BLS NRV
 PEW VBY WHT WIN

NRV
 Trim





NEW
Santa Fe (STF)

Available Style - 6647 / XS-2X

Coordinating Colors

- AQU
- BLK
- GPH
- PEW
- PPY
- RTL

WHT

- BLK
- Trim



NEW
Gemma (GEM)

Available Style - 6077 / XS-2X

Coordinating Colors

- BLK
- EVL
- GPH
- HPK
- PEW
- PPY

WHT

- PEW
- Trim



Finer Things (FTH)

Available Style - 6617 / XS-2X

Coordinating Colors

- AQU
- BLK
- CBL
- GBL
- PEW
- RTL
- VBY
- WHT

- PEW
- Trim



A BOLD PAIRING!



Sporty contrast top stitching

Accessory loop inside pocket

Secret mesh pocket in pocket

Front seam pockets

Triple cargo pocket with bungee cord

Double knee stitch detail



6414 GPH
5414 GPH

6214 PPY
5214 PPY



Triple cargo pocket with bungee cord

Front slash pockets

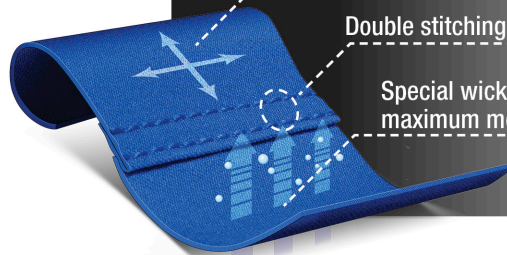
Double knee stitch detail

Four-Stretch

4-Way Stretch for maximum performance

Double stitching for maximum durability

Special wicking features for maximum moisture management



WEAR IT STRAIGHT OUT OF THE DRYER!

Our 100% polyester Four Stretch fabric is created using a mechanical stretch yarn process specially engineered to exceed the performance and durability of other fabrics. Unique washed-effect texture for unbeatable softness and EASY CARE.

7004 RYL
2009 WHT
5214 WHT

Four-Stretch⁴

High Performance, Seriously
Low Maintenance Workwear

Y-Neck Multi-Pocket Top | 6414

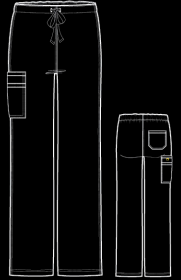
- Front Y-Neck wrap top
- Front seaming for shaping
- Two front large patch pockets, one signature WonderWink pocket
- Double-needle stitching at front seams, shoulders and pockets
- Tagless neck
- 100% polyester



XS - 3X (Size M length: 26 1/4")
BLK, CBL, CRB, EVL, **GPH**, HTR, NVY,
PEW, **PPY**, RTL, RYL, VBY, WHT, WIN

Cargo Drawstring Pant | 5414

- Full dyed-to-match drawstring at waist
- Back elastic
- Flat front for a tailored look
- Signature WonderWink cargo pocket
- Back patch pocket
- Double stitching at side seams
- 100% polyester



XS - 3X
BLK, CBL, CRB, EVL, **GPH**, HTR, NVY,
PEW, **PPY**, RTL, RYL, VBY, WHT, WIN





BLK black	CBL ceil blue	CRB caribbean blue	EVL electric violet	NEW GPH graphite	HTR hunter	NAVY navy
PEW pewter	NEW PPY poppy	RTL real teal	RYL royal	VBY very berry	WHT white	WIN wine

Sporty Button Front Jacket | 8114

- Button front round neck jacket
- Front princess seams for shaping
- Dropped shoulder
- Front large patch pockets, one signature WonderWink pocket
- Rib-knit cuff that can be worn tucked in
- Tagless neck
- 100% polyester



XS - 3X (Size M length: 29 3/4")
BLK, **CBL**, **EVL**, **GPH**, NAVY, PEW, WHT

Women's 4-Stretch Lab Coat | 7004

- Princess seaming and a mock belt at the waist to make the coat figure-flattering
- One signature WonderWink pocket with an ID bungee and mesh coin pocket
- Three button closure
- Two buttons on each sleeve and a back mock belt with 4 buttons
- An adjustable bungee closure so you can choose your own silhouette
- Single back vent
- 100% polyester



XS - 2X (Size M length: 32")
BLK, **GPH**, **RYL**, WHT



Four-Stretch⁴

High Performance, Seriously
Low Maintenance Workwear

Sporty V-Neck Top | 6214

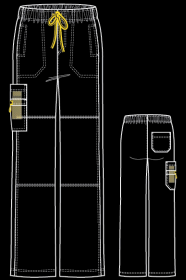
- Shaping panel at waist and sides
- Angled yoke at shoulders
- Tagless neck
- Stylized back yoke with locker loop
- Logo at back yoke
- Two front pockets with utility loop
- Secret mesh pocket in pocket
- 100% polyester



XS - 3X (Size M length: 27 1/4")
BLK, CBL, CRB, EVL, **GPH**, HTR, NVY,
PEW, **PPY**, RTL, RYL, VBY, WHT, WIN

Sporty Cargo Pant | 5214

- Boot cut cargo pocket
- Full elastic WonderWink drawstring
- Back patch pocket
- Forward side seam
- Reinforced front seam pockets
- Double knee stitch detail
- Side vents at hem for ease of movement
- 100% polyester



XS - 3X
BLK, CBL, CRB, EVL, **GPH**, HTR, NVY, PEW,
PPY, RTL, RYL, VBY, WHT, WIN

Petite XS - 3X (5214P)
BLK, CBL, NVY, PEW, RTL, RYL, **VBY**, WHT

Tall XS - 3X (5214T)
BLK, CBL, NVY, PEW, RYL, **VBY**, WHT



BLK black	CBL ceil blue	CRB caribbean blue	EVL electric violet	NEW GPH graphite	HTR hunter	NVY navy
PEW pewter	NEW PPY poppy	RTL real teal	RYL royal	VBY very berry	WHT white	WIN wine

Raglan Sleeve Mock Wrap Top | 6314

- Raglan sleeve with double-needle stitching
- Front princess seaming for shaping
- Mock belt at waist
- Tagless neck
- Stylized back yoke with locker loop
- Logo at back yoke
- Two front pockets with utility loop
- Secret mesh pocket in pocket
- 100% polyester



XS - 3X (Size M length: 27 ¼")
BLK, CBL, CRB, EVL, **GPH**, HTR, NVY,
PEW, **PPY**, RTL, RYL, VBY, WHT, WIN

Flip Flare Leg Pant | 5314

- Flare leg pant with front pitched seaming
- Full elastic waistband that can be worn flipped up or down
- Two front pockets with stitched down inner pocket bag
- Two large back pockets, one with signature WonderWink pocket (total 4 at back)
- Darts at back waist for added curves
- Vented hems for ease of movement
- 100% polyester

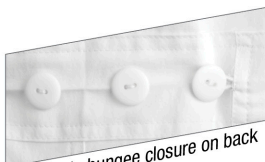


XS - 3X
BLK, CBL, CRB, EVL, **GPH**, HTR, NVY,
PEW, **PPY**, RTL, RYL, VBY, WHT, WIN



Lab Coats

A well tailored lab coat is one of the best wardrobe investments you can make.



Adjustable bungee closure on back

Origins Lab Coat | 7106

- Unisex fit coat
- 6 pockets
- Two large roomy patch pockets, one WonderWink signature pocket with hidden mesh pocket, and one scissors pocket at wearer's left side.
- Button closure with 3 Wink logo buttons
- Signature ID bungee loop
- 65% polyester/ 35% cotton

XXS - 5X (Size M back length: 33 1/2")

Long XS - 5X (2" longer)

WHT



Women's 4-Stretch Lab Coat | 7004

- Princess seaming and a mock belt at the waist to make the coat figure-flattering
- One signature WonderWink pocket with an ID bungee and mesh coin pocket
- Three button closure
- Two buttons on each sleeve and a back mock belt with 4 buttons
- An adjustable bungee closure so you can choose your own silhouette
- Single back vent
- 100% polyester

XS - 2X (Size M back length: 32")

BLK, **GPH**, **RYL**, WHT





Mink
by WonderWink

Oh my soft!

Update your closet with our wardrobe staples.

We've incorporated the fundamentals of classic workwear and applied our signature design elements to create your new favorite outfit.

Our sweet, feather-light, and baby-soft cotton rich poly blend fabric defines luxury. Perfected finishes, details and fit to flatter any body type. Modern tailoring to create unprecedented comfort.



6103 WHT
5103 WHT



Four Pocket Ruffle Neck Top | 6403

- Banded Neck, sleeves and center front
- Banded pocket openings with decorative buttons
- Three front mini decorative buttons
- Partial elastic at back waist
- Signature ID bungee loop

XS - 2X (Size M length: 27 ¼")

ALM, BLK, BLS, HPK, NVY, PEW, RYL, WHT



Ruffle Wrap Top | 6503

- Mock Wrap Top with ruffle detail at yoke
- Two lower large patch pockets
- Lower cell pocket with matching ruffle detailing
- Soft mini ruffle at shoulder caps
- Back yoke with soft gathers that create an easy, swing fit

XS - 2X (Size M length: 28 ¼")

ALM, BLK, BLS, HPK, NVY, PEW, RYL, WHT



Ruffle Cargo Roll-Up Pant | 5303

- Two front patch pockets and one back pocket
- Large cargo with button flap closure
- Small cargo with ruffle detail at button flap closure
- Elasticized utility loop on wearer's right side
- Full drawstring with easy elastic at waist that creates a soft ruffle
- Button fastener tab at leg openings for optional roll-up capri pants

XS - 2X

ALM, BLK, BLS, HPK, NVY, PEW, RYL, WHT



Fashion V-Neck Top | 6103

- Fashion v-neck with yoke detail
 - 2 lower pockets including 1 WonderWink signature triple pocket with a hidden mesh pocket (total 5)
 - Signature ID bungee loop
 - Invisible 3 part accessory loop
- XS - 2X (Size M length: 26 1/2")
BLK, HPK, NVY, PEW, RYL, WHT



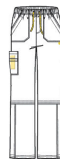
Fashion Y-Neck Top | 6203

- Fashion y-neck with princess seaming for a flattering tailored fit
 - 2 lower pockets including 1 WonderWink signature triple pocket with a hidden mesh pocket (total 5)
 - Signature ID bungee loop. Invisible 3 part accessory loop
- XS - 2X (Size M length: 27 1/4")
ALM, BLK, BLS, HPK, NVY, PEW, RYL, WHT



Fashion Round Neck Top | 6303

- Fashion round neck top with a button closure
 - Lengthening front seaming detail with 2 welt pockets
 - Banded sleeves with soft shirring detail
- XS - 2X (Size M length: 27 1/4")
BLK, HPK, NVY, PEW, RYL, WHT



Boot Cut Cargo Pant | 5103

- Boot cut cargo pant with a mock fly and a full elastic and drawstring waist
 - 2 front patch pockets, 1 WonderWink triple cargo pocket with a hidden mesh pocket, and 1 back pocket (total 7)
 - Stitch detailing at the knee and hem
- XS - 2X
BLK, HPK, NVY, PEW, RYL, WHT



Flare Leg Fashion Pant | 5203

- Flare leg fashion pant and a 1/2 elastic and drawstring waist
 - 2 front slash pockets, 1 hidden mesh pocket, and 1 WonderWink signature triple back pocket (total 6)
 - Vented hems for ease of movement
- XS - 2X
ALM, BLK, BLS, HPK, NVY, PEW, RYL, WHT
Petite XS - 2X (5203P)
BLK, HPK, NVY, PEW, RYL, WHT

ALM almond
BLK black
BLS blush
HPK hot pink
NVY navy
PEW pewter
RYL royal
WHT white

TWO STRETCH

Face it. We perform better when we feel good. Indulge in our decadently soft blend of 52% of the finest cotton, 45% polyester and 3% spandex. Our stretch blend provides a beautiful hand and adds substance to the fabric. The two-way stretch weave creates a beautiful drape and a fit that feels customized to every woman's shape. Ultra flattering, incredibly versatile, and perfect for ease of movement and flow. Showcase your grace and strength.



6202 HPK
5202 HPK



6102 BLK
5102 BLK



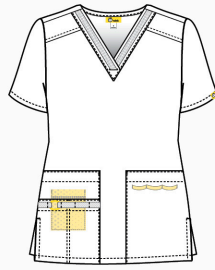
V-NECK | 6102

Flex Trimmed Sport Top

- Dyed-to-match mesh flex trim on the neck and pocket
- 2 Lower pockets including an accent WonderWink signature triple pocket with a round ID bungee and a hidden mesh pocket (total 5)
- Invisible 3 part accessory loop
- Side vents

XS - 2X (Size M length: 26 ¼")

AQU, BLK, GRP, HPK, Nvy, WHT



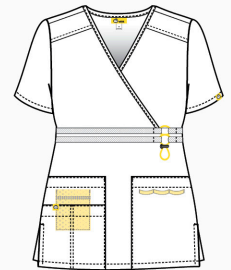
MOCK WRAP | 6202

Flex Waist Top

- Dyed-to-match mesh flex trim at the waist with a figure 8 ID bungee detail
- 2 lower pockets including a WonderWink signature triple pocket (total 5)
- Invisible 3 part accessory loop
- Side vents

XS - 2X (Size M length: 27 ¾")

AQU, BLK, GRP, HPK, Nvy, WHT



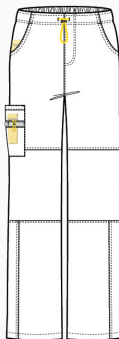
CARGO | 5102

Bungee Waist Flex Cargo Pant

- Dyed-to-match mesh trim
- 2 front pockets, 1 peek-a-boo mesh pocket, 1 WonderWink signature triple cargo pocket with a hidden mesh pocket, and 2 back pockets (total 9)
- Bungee waist tie
- Double knees

XS - 2X

AQU, BLK, GRP, HPK, Nvy, WHT



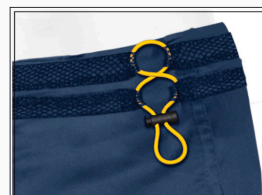
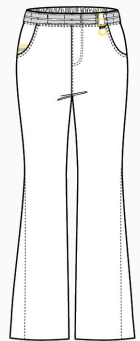
FLARE | 5202

Flare Leg Flat Front Flex Waist Pant

- Dyed-to-match mesh flex trim at the waist with a figure 8 ID bungee detail
- 2 front pockets, 1 peek-a-boo mesh pocket and 1 WonderWink signature triple back pocket (total 6)

XS - 2X

AQU, BLK, GRP, HPK, Nvy, WHT



AQU
aqua

BLK
black

GRP
grape

HPK
hot pink

NVY
navy

WHT
white



6026 ORS



6026 YLW



Original



6036 MBL



6046 HPK



6016 GRP

MS BRIGHTS

BRILLIANTLY COOL

Hardwearing, affordable & utilitarian chic basics with subtle design elements that add value to your investment. Let your imagination play with patterns, colors and styles to suit your every mood.



BRIGHTS



NEW Turtle Swim Meet (TWM)

Available Style - 6017 / XS-3X

Coordinating Colors

- GAP
- HTR
- MBL
- RYL
- WHT
- YLV



NEW Tropical Punch (TPP)

Available Style - 6027 / XS-3X

Coordinating Colors

- GAP
- GRP
- HPK
- MBL
- ORS
- PEW
- YLV



LOOK ON THE BRIGHT SIDE!



SHE PACKS A PUNCH!



NEW
Spring Tulips (SRT)
Available Style - 6637 / XS-3X

Coordinating Colors

GAP	GRP	HPK
MBL	ORS	PEW
WHT	YLW	



THE ALPHA {6006}

UNISEX fit



- Unisex fit V-neck top
 - 1 WonderWink signature triple chest pocket (total 3)
 - ID bungee loop
 - 65% polyester/ 35% cotton
- XS - 5X (Size M length: 28 ¾")
 BLK, CBL, CHC, EGP, GAP, GBL, HPK, HTR, KHI, MBL, NVY, PEW, RYL, WHT, WIN

THE BRAVO {6016}



- WonderWink "Lady" fit V-neck top
 - 2 lower pockets including 1 WonderWink signature triple pocket with a hidden mesh pocket (total 5)
 - Signature ID bungee loop
 - Invisible 3 part accessory loop
 - 65% polyester/ 35% cotton
- XXS - 5X (Size M length: 27 ¾")
 BLK, CBL, CHC, EGP, GAP, GBL, **GRP**, HPK, HTR, KHI, MBL, NVY, **ORS**, PEW, RED, RYL, WHT, WIN, **YLW**

THE DELTA {8006}

UNISEX fit



- Unisex fit round neck jacket
 - Dyed to match snap front jacket
 - 2 lower pockets including 1 WonderWink signature triple pocket with a hidden mesh pocket and 2 invisible chest pockets (total 7)
 - Signature ID bungee loop
 - Invisible 3 part accessory loop
 - 65% polyester/ 35% cotton
- XS - 5X (Size M length: 29 ¾")
 BLK, CBL, NVY, PEW, RYL, WHT

THE ECHO {6036}



- WonderWink "Lady" fit collared top
 - 2 lower pockets including 1 WonderWink signature pocket with a hidden mesh pocket (total 5)
 - Signature ID bungee loop
 - Invisible 3 part accessory loop
 - Sporty stitching at waistband, front mock wrap, and around collar
 - Front bust darts for shaping
 - 65% polyester/ 35% cotton
- XS - 3X (Size M length: 26 ¾")
 BLK, EGP, GAP, MBL, NVY, PEW, RED, RYL, WHT

NEW COLOR

BLK
26 black

CBL
ceil blue

CHC
chocolate

EGP
eggplant

GAP
green apple

GBL
galaxy blue

GRP
grape

HPK
hot pink

HTR
hunter



THE CHARLIE

{6026}



CONTRAST TRIM COLORS



- WonderWink "Lady" fit y-neck mock wrap top
- 2 lower pockets including 1 WonderWink signature triple pocket with a hidden mesh pocket (total 5)
- Signature ID bungee loop
- Invisible 3 part accessory loop
- 65% polyester/ 35% cotton

XXS - 5X (Size M length: 26 1/4")

BKS, BLK, CBL, CHC, EGP, GAP, GBL, **GRP**, HPK, HTR, KHI, MBL, NVS, NVY, **ORS**, PEW, RED, RYL, RYS, WHT, WIN, **YLW**

SOLID TRIM COLORS



THE FOXTROT

{6046}



- WonderWink "Lady" fit notched round neck top
- 2 lower pockets including 1 WonderWink signature pocket with a hidden mesh pocket and one invisible chest pocket (total 6)
- Signature ID bungee loop and invisible 3 part accessory loop
- Front seaming for added shaping
- Double-stitch detailing at neckline, yoke, front seams, and chest pocket
- 65% polyester/ 35% cotton

XS - 3X (Size M length: 27 3/4")

BLK, CBL, CHC, GBL, HPK, KHI, HTR, NVY, PEW, WIN

THE GOLF

{6056}



- WonderWink "Lady" fit mock wrap top
- 2 large front patch pockets
- One signature WonderWink pocket and one Peek-a-Boo pocket
- Signature ID bungee loop and invisible 3 part accessory loop
- Front mock belt with bust darts for shaping
- Sporty stitching at neckline and pockets
- Tagless neck
- 65% polyester/ 35% cotton

XXS - 3X (Size M length: 27 3/4")

BLK, CBL, CHC, EGP, GAP, GBL, **GRP**, HPK, HTR, KHI, MBL, NVY, **ORS**, PEW, RED, RYL, WHT, WIN, **YLW**

NEW COLOR

NEW COLOR

KHI
khaki

MBL
malibu blue

NVY
navy

ORS
orange sherbet

PEW
pewter

RED
red

RYL
royal

WHT
white

WIN
wine

YLW
yellow



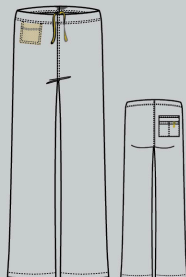
5006 The Papa

UNISEX
fit

- Seamless Unisex Fit
- 4 pockets (one back triple pocket)
- Convertible drawstring - placement allows drawstring to be tucked inside the pant or displayed outside of it
- Signature ID bungee loop
- 65% polyester/ 35% cotton

XS - 5X, Petites: XS - 3X, Talls: XS - 3X
BLK, CBL, CHC, EGP, GAP, GBL, HPK, HTR, KHI,
MBL, NVY, PEW, RYL, WHT, WIN

Easy fit and easy to wear, a relaxed
alternative to the standard boot cut.
Flattering on all body types.



5016 The Quebec

- WonderWink "Lady" Fit
- 8 pockets
- Full elastic waistband that can be worn flipped down
- Signature ID bungee loop
- 65% polyester/ 35% cotton

XS - 5X, Petites: XS - 3X, Talls: XS - 3X
BLK, CBL, CHC, EGP, GAP, GBL, HPK, HTR, KHI,
MBL, NVY, PEW, RED*, RYL, WHT, WIN
*Petite and Tall are not available in RED

NEW COLOR

BLK
black

CBL
ceil blue

CHC
chocolate

EGP
eggplant

GAP
green apple

GBL
galaxy blue

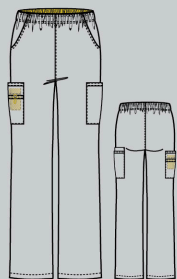
GRP
grape

HPK
hot pink

HTR
hunter



A universal favorite, the classic relaxed pant. Comfortable fit through the seat and thigh, widening slightly below the knee.



5026 The Romeo

- WonderWink "Lady" Fit
- 6 pockets
- 1/2 elastic waistband / flare leg
- Convertible drawstring - placement allows drawstring to be tucked inside the pant or displayed outside of it
- Signature ID bungee loop
- 65% polyester/ 35% cotton

XXS - 5X, Petites: XXS - 3X, Talls: XS - 3X
BLK, CBL, CHC, EGP, GAP, GBL, **GRP**, HPK, HTR, KHI, MBL, NVY, **ORS**, PEW, RED*, RYL, WHT, WIN, **YLW**

*Petite and Tall are not available in RED

Classic rise, slim through the hips and thighs, fitted just at the knee before flaring at the leg. Very lengthening and body slimming.



NEW COLOR

KHI
khaki

MBL
malibu blue

NVY
navy

ORS
orange sherbet

PEW
pewter

RED
red

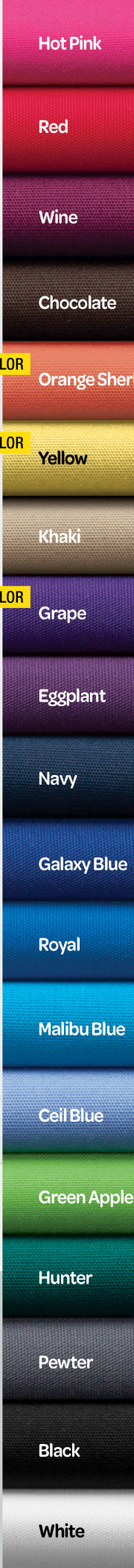
RYL
royal

WHT
white

WIN
wine

NEW COLOR

YLW
yellow



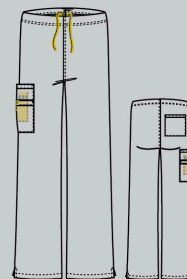
5036 The Sierra

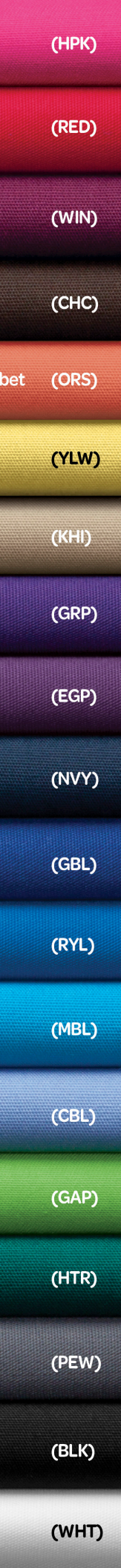
UNISEX
fit

- Unisex fit
- 5 pockets
- One back pocket and one signature WonderWink cargo pocket with hidden mesh pocket
- Convertible drawstring - placement allows drawstring to be tucked inside the pant or displayed outside of it
- 65% polyester/ 35% cotton

XXS - 5X, Petites: XXS - 3X, Talls: XS - 3X
BLK, CBL, CHC, EGP, GAP, GBL, HPK, HTR,
KHI, MBL, NVY, PEW, RED, RYL, WHT, WIN

Easy fit and easy to wear, a relaxed alternative to the standard boot cut with lots of pockets for storage.



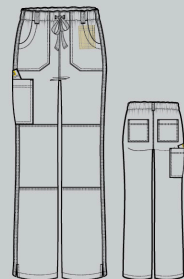


5046 The Tango

- WonderWink "Lady" fit
- Straight leg fashion utility pant
- 7 pockets
- Full dyed-to-match drawstring with easy elastic at waist
- Double-stitched knee and side seams
- Belt loops at waist
- Bottom vents
- 65% polyester/ 35% cotton

XXS - 3X, Petite: XXS-3X, Tall: XS-3X
 BLK, CBL, CHC, EGP, GAP, GBL, **GRP**, HPK, HTR,
 KHI, MBL, NVY, **ORS**, PEW, RED, RYL, WHT, WIN, **YLW**

Mid rise, easy fit fashion pant with feminine and utilitarian details perfect for work and play.





Ruffle Your Feathers (RYF)

Available Style - 6637 / XS-3X

Coordinating Colors



Twinkle (TWK)

Available Style - 6027 / XS-3X

Coordinating Colors



Prints make fashion fun, sassy, edgy, cute and dramatic...

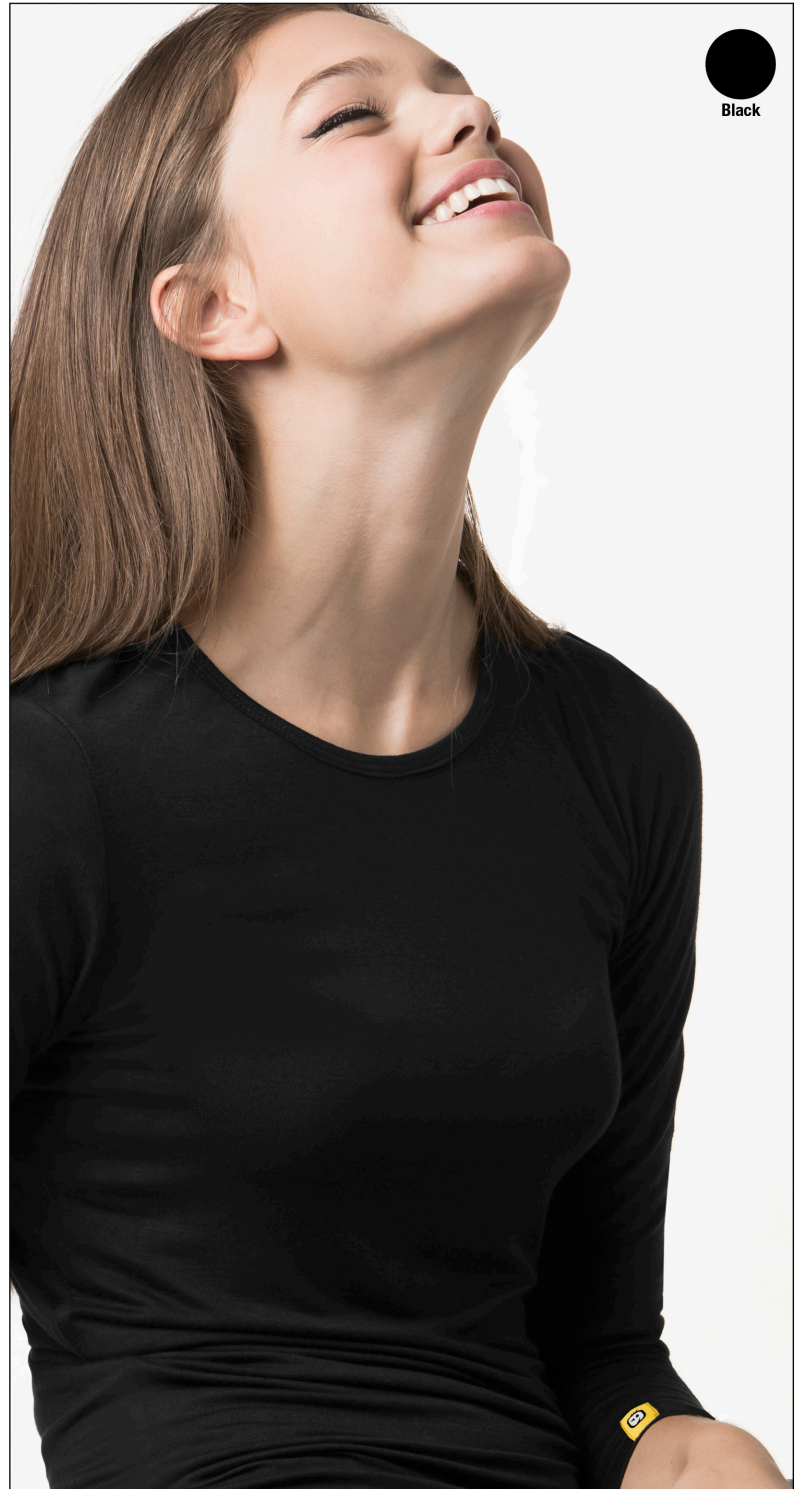
show off your personality with these great conversation starters. Our printed tops are crafted from 100% cotton for a soft and easy-to-maintain garment that's always comfortable to wear.



LAYERS



Silky Long Sleeve Tee | 2009



A fashionable twist on the classic long sleeve tee for those who love soft and luxurious fabrics. Our extra long sleeves create a modern look that's up-to-date with the latest trends. Indulge yourself.

XS - 2X (Size M length: 27 1/4")
BLK, Nvy, PEW, WHT
95% Rayon / 5% Spandex



WonderWink Tank | 1019



Our decadently soft 100% washed cotton tanks are perfect for layering. Yellow and White feature our WonderWink Logo across the chest. The Black is solid.
XS - 2X (Size M length: 28 1/4")
BLK, WHT, WNY
100% cotton



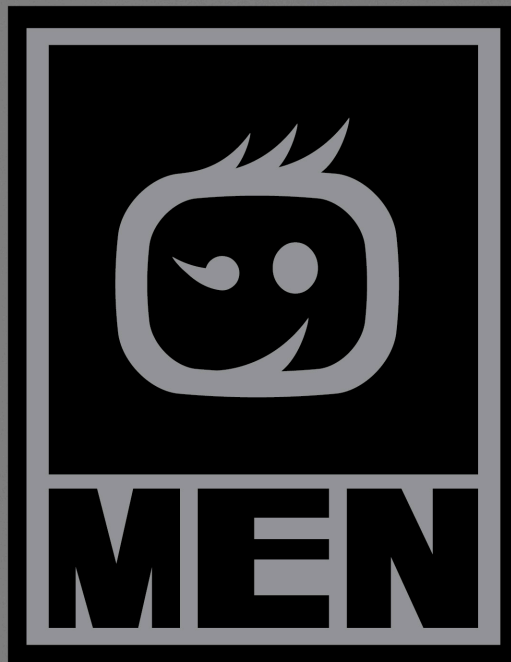
Washed cotton Long Sleeve Tee | 2019



A shapely fitted basic crew tee that is a versatile must-have for every woman's closet. It's a great layering piece with flat seaming at the cuffs for additional comfort. Our lived-in, washed cotton knit fabric is unbelievably soft with a mini chest pocket that adds a touch a fashion.

XS - 2X (Size M length: 27 3/4")
RYL, WHT, WNY
100% Washed cotton





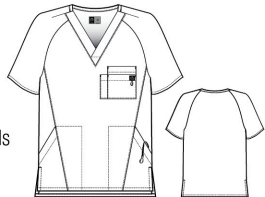
65% polyester / 35% cotton



BLK black	CBL ceil blue	HTR hunter	KHI khaki
NAVY navy	PEW pewter	RYL royal	WIN wine

Men's Raglan Solid 5 Pocket Top | 6716

- Raglan sleeve with shoulder darts
- Tagless neck
- Geometric stacked chest pocket with pen slot
- Front forward seams with two roomy invisible pockets
- Signature black ID bungee loop at chest pocket
- Inner utility hook to secure accessories such as keys or badge reels



S - 3X (Size M length: 31")

BLK, CBL, HTR, KHI, NAVY, PEW, RYL, WIN



BKR
BLK/RED

HNY
HTR/NAVY

NCB
NAVY/CBL

PNV
PEW/NAVY

RPW
RYL/PEW

WNV
WIN/NAVY

Men's Raglan Block 5 Pocket Top | 6716C

- Contrast raglan sleeve with shoulder darts
- Tagless neck
- Geometric stacked chest pocket with pen slot
- Front forward seams with two roomy invisible pockets
- Signature black ID bungee loop at chest pocket
- Inner utility hook to secure accessories such as keys or badge reels



S - 3X (Size M length: 31")

BKR, HNY, NCB, PNV, RPW, WNV



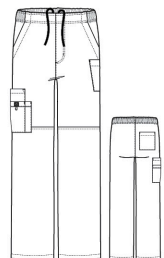
Men's Cargo Pant | 5716

- Full inner drawstring
- Flat front with 3/4 elastic waist
- Functional zipper fly
- Two front roomy slash pockets
- Scissors pocket beneath wearer's left slash pocket
- Geometric stacked cargo pocket with pen slot

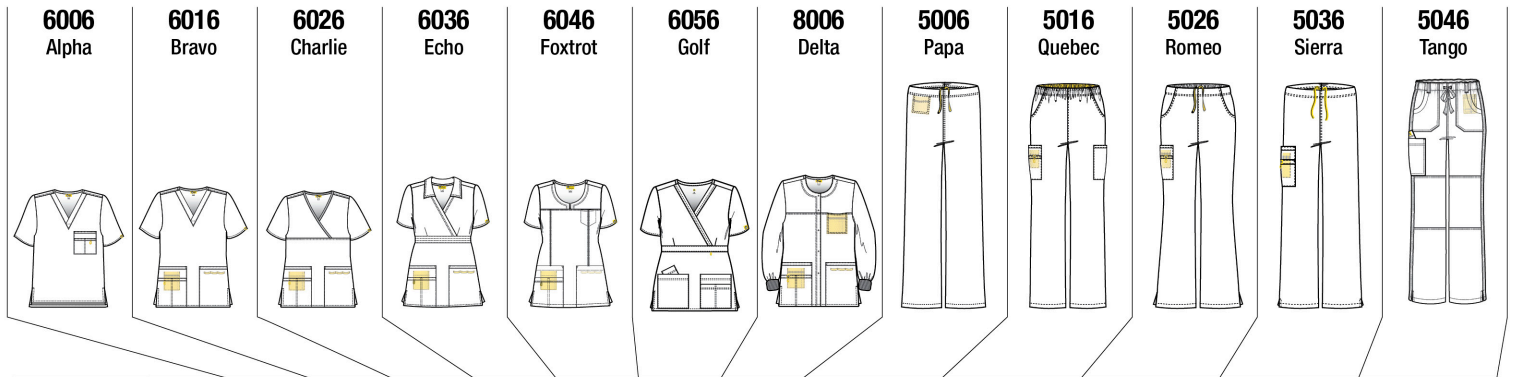
S - 3X

Tall S - 3X(5716T)

BLK, CBL, HTR, KHI, NAVY, PEW, RYL, WIN



Origins



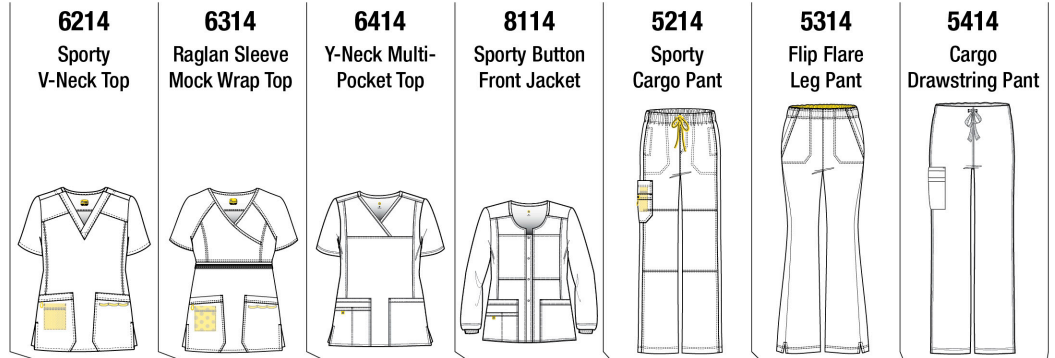
Size / Color	6006	6016	6026	6036	6046	6056	8006	5006	5016	5026	5036	5046
Regular	XS - 5X	XXS - 5X	XXS - 5X	XS - 3X	XS - 3X	XXS - 3X	XS - 5X	XS - 5X	XS - 5X	XXS - 5X	XXS - 5X	XXS - 3X
Petite								XS - 3X	XS - 3X	XXS - 3X	XXS - 3X	XXS - 3X
Tall								XS - 3X	XS - 3X	XS - 3X	XS - 3X	XS - 3X
Black BLK	X	X	X	X	X	X	X	X, P, PX, T, TX	X, P, PX, T, TX	X, P, PX, T, TX	X, P, PX, T, TX	X, P, PX, T, TX
Ceil Blue CBL	X	X	X		X	X	X	X, P, PX, T, TX	X, P, PX, T, TX	X, P, PX, T, TX	X, P, PX, T, TX	X, P, PX, T, TX
Chocolate CHC	X	X	X		X	X		X, P, PX, T, TX	X, P, PX, T, TX	X, P, PX, T, TX	X, P, PX, T, TX	X, P, PX, T, TX
Eggplant EGP	X	X	X	X		X		X, P, PX, T, TX	X, P, PX, T, TX	X, P, PX, T, TX	X, P, PX, T, TX	X, P, PX, T, TX
Green Apple GAP	X	X	X	X		X		X, P, PX, T, TX	X, P, PX, T, TX	X, P, PX, T, TX	X, P, PX, T, TX	X, P, PX, T, TX
Galay Blue GBL	X	X	X		X	X		X, P, PX, T, TX	X, P, PX, T, TX	X, P, PX, T, TX	X, P, PX, T, TX	X, P, PX, T, TX
Grape GRP		X	X			X				X, P, PX, T, TX		X, P, PX, T, TX
Hot Pink HPK	X	X	X		X	X		X, P, PX, T, TX	X, P, PX, T, TX	X, P, PX, T, TX	X, P, PX, T, TX	X, P, PX, T, TX
Hunter HTR	X	X	X		X	X		X, P, PX, T, TX	X, P, PX, T, TX	X, P, PX, T, TX	X, P, PX, T, TX	X, P, PX, T, TX
Khaki KHI	X	X	X		X	X		X, P, PX, T, TX	X, P, PX, T, TX	X, P, PX, T, TX	X, P, PX, T, TX	X, P, PX, T, TX
Malibu Blue MBL	X	X	X	X		X		X, P, PX, T, TX	X, P, PX, T, TX	X, P, PX, T, TX	X, P, PX, T, TX	X, P, PX, T, TX
Navy NVY	X	X	X	X	X	X	X	X, P, PX, T, TX	X, P, PX, T, TX	X, P, PX, T, TX	X, P, PX, T, TX	X, P, PX, T, TX
Orange Sherbet ORS		X	X			X				X, P, PX, T, TX		X, P, PX, T, TX
Pewter PEW	X	X	X	X	X	X	X	X, P, PX, T, TX	X, P, PX, T, TX	X, P, PX, T, TX	X, P, PX, T, TX	X, P, PX, T, TX
Red RED		X	X	X		X			X	X	X, P, PX, T, TX	X, P, PX, T, TX
Royal RYL	X	X	X	X		X	X	X, P, PX, T, TX	X, P, PX, T, TX	X, P, PX, T, TX	X, P, PX, T, TX	X, P, PX, T, TX
White WHT	X	X	X	X		X	X	X, P, PX, T, TX	X, P, PX, T, TX	X, P, PX, T, TX	X, P, PX, T, TX	X, P, PX, T, TX
Wine WIN	X	X	X		X	X		X, P, PX, T, TX	X, P, PX, T, TX	X, P, PX, T, TX	X, P, PX, T, TX	X, P, PX, T, TX
Yellow YLW		X	X			X				X, P, PX, T, TX		X, P, PX, T, TX

X: 2X-5X, P: Petite XXS-XL, PX: Petite 2X-3X, T: Tall XS-XL, TX: Tall 2X-3X

6026 COLOR COMBINATIONS

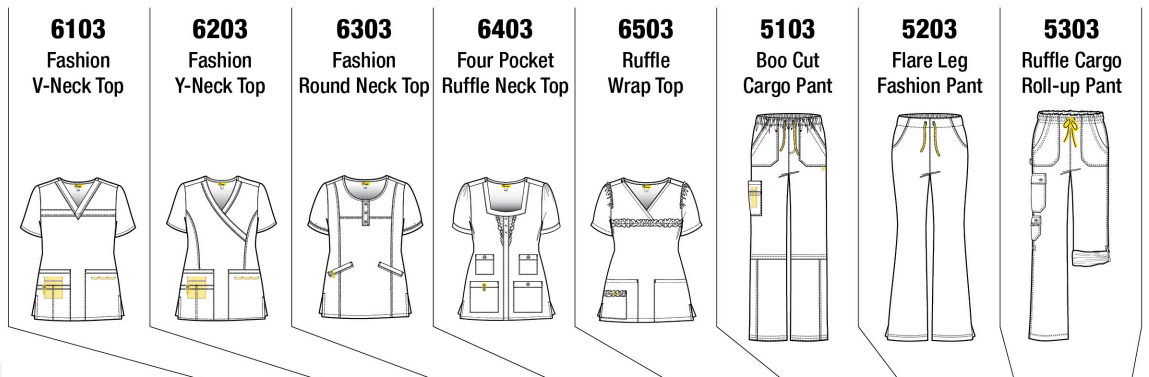


Four-Stretch⁴



Size / Color		6214	6314	6414	8114	5214	5314	5414
Regular		XS - 3X	XS - 3X	XS - 3X	XS - 3X	XS - 3X	XS - 3X	XS - 3X
Petite						XS - 3X		
Tall						XS - 3X		
Black	BLK	X	X	X	X	X, P, PX, T, TX	X	X
Ceil Blue	CBL	X	X	X	X	X, P, PX, T, TX	X	X
Caribbean Blue	CRB	X	X	X		X	X	X
Electric Violet	EVL	X	X	X	X	X	X	X
Graphite	GPH	X	X	X	X	X	X	X
Hunter	HTR	X	X	X		X	X	X
Navy	NVY	X	X	X	X	X, P, PX, T, TX	X	X
Pewter	PEW	X	X	X	X	X, P, PX, T, TX	X	X
Poppy	PPY	X	X	X		X	X	X
Real Teal	RTL	X	X	X		X, P, PX	X	X
Royal	RYL	X	X	X		X, P, PX, T, TX	X	X
Very Berry	VBY	X	X	X		X, P, PX, T, TX	X	X
White	WHT	X	X	X	X	X, P, PX, T, TX	X	X
Wine	WIN	X	X	X		X	X	X

X: 2X-3X, P: Petite XS-XL, PX: Petite 2X-3X, T: Tall XS-XL, TX: Tall 2X-3X



Size / Color		6103	6203	6303	6403	6503	5103	5203	5303
Regular		XS - 2X	XS - 2X	XS - 2X	XS - 2X	XS - 2X	XS - 2X	XS - 2X	XS - 2X
Petite								XS - 2X	
Almond	ALM		X		X	X		X	X
Black	BLK	X	X	X	X	X	X	X, P, PX	X
Blush	BLS		X		X	X		X	X
Hot Pink	HPK	X	X	X	X	X	X	X, P, PX	X
Navy	NVY	X	X	X	X	X	X	X, P, PX	X
Pewter	PEW	X	X	X	X	X	X	X, P, PX	X
Royal	RYL	X	X	X	X	X	X	X, P, PX	X
White	WHT	X	X	X	X	X	X	X, P, PX	X

X: 2X, P: Petite XS-XL, PX: Petite 2X



measure me



Trust us.

Finding the right size for your body is only half the battle. A correctly fitting garment not only keeps you looking professional, but also keeps you feeling comfortable for those long days at work. So take a deep breath and grab your tape measure.

How to take your measurements:

Chest:

Exhale, then measure under your arms, around the fullest part of your chest.

Waist:

Keep the tape loose and measure around your natural waistline.

Hip:

Standing with your feet slightly apart, measure around the fullest part of your body.

Inseam:

Measure from the crotch to the bottom of the leg.

Length:

We recommend Petites for women up to 5'2", Regular length up to 5'6", and Tall length for 5'7" and above.



"Lady" Fit	XXS	XS	S	M	L	XL	2X	3X	4X	5X
Ready-to-Wear	0	2-4	6-8	10-12	14-16	18-20	22-24	26-28	30-32	34-36
Chest/Bust	30-31	32-33	34-35	36-38	39-42	43-46	47-50	51-54	55-58	59-62
Waist	22-23	24-25	26-27	28-30	31-34	35-38	39-42	43-46	47-50	51-54
Hip	33-34	35-36	36-37	38-40	41-44	45-48	49-52	53-56	59-62	63-66

Inseam: Regular-31", Petite-28", Tall-33"

Unisex Fit	XXS	XS	S	M	L	XL	2X	3X	4X	5X
Ready-to-Wear	0	2-4	6-8	10-12	14-16	18-20	22-24	26-28	30-32	34-36
Chest/Bust	31-32	33-34	35-37	38-40	41-44	45-48	49-52	53-56	57-60	61-64
Waist	23-24	25-26	27-29	30-32	33-36	37-40	41-44	45-48	49-52	53-57
Hip	32-33	34-35	36-38	39-41	42-45	46-49	50-53	54-57	58-61	62-65

Inseam: Regular-31", Petite-28", Tall-33"

Men's Fit	S	M	L	XL	2X	3X
Chest	36-38	39-41	42-45	46-49	50-53	54-57
Waist	27-29	30-32	33-36	37-40	41-44	45-48
Hip	36-38	39-41	42-45	46-49	50-53	54-57

Inseam: Regular-31", Tall-34"

CID RESOURCES, INC.
 11625 Columbia Center Dr. Ste.200
 Dallas, TX 75229
 Toll Free Phone 877-554-3306
 Toll Free Fax 877-734-1508

www.WonderWinkScrubs.com